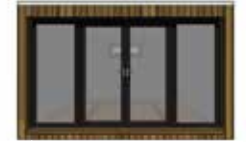




# Helix Studio.

Example pricing to act as a guide, nearly all our projects are bespoke

## Studio Centre. Centrally mounted doors and windows



Model	External size (m)	External size (feet)	Internal size (m)	Internal size (feet)	Internal area (m <sup>2</sup> )	RRP (inc VAT)
2 x 2 C	2.7 x 2.5	8' 10" x 8' 2"	2.4 x 2.2	7' 10" x 7' 3"	5.2	£10,200.00
3 x 2 C	3.9 x 2.5	12' 9" x 8' 2"	3.6 x 2.2	11' 10" x 7' 3"	7.7	£12,300.00
3 x 3 C	3.9 x 3.7	12' 9" x 12' 1"	3.6 x 3.1	11' 10" x 10' 2"	11.0	£14,300.00
4 x 3 C	5.1 x 3.7	16' 8" x 12' 1"	4.8 x 3.0	15' 9" x 9' 10"	14.6	£16,700.00
3 x 4 C	3.9 x 4.9	12' 9" x 16' 0"	3.6 x 4.3	11' 10" x 14' 1"	15.0	£17,200.00
5 x 3 C	6.3 x 3.7	20' 7" x 12' 1"	6.0 x 3.0	19' 8" x 9' 10"	18.2	£18,100.00
4 x 4 C	5.1 x 4.9	16' 8" x 16' 0"	4.8 x 4.2	15' 9" x 13' 9"	20.5	£19,300.00
6 x 3 C	7.5 x 3.7	24' 6" x 12' 1"	7.2 x 3.0	23' 7" x 9' 10"	22.0	£22,000.00
5 x 4 C	6.3 x 4.9	20' 7" x 16' 0"	6.0 x 4.2	19' 8" x 13' 9"	25.3	£23,100.00
7 x 3 C	8.7 x 3.7	28' 6" x 12' 1"	8.4 x 3.0	27' 7" x 9' 10"	25.6	£24,300.00
8 x 3 C	9.9 x 3.7	32' 5" x 12' 1"	9.6 x 3.0	31' 6" x 9' 10"	29.2	£26,000.00
6 x 4 C	7.5 x 4.9	24' 6" x 16' 0"	7.2 x 4.2	23' 7" x 13' 9"	30.0	£26,200.00

## Studio Left & Right. Offset doors and windows



Model	External size (m)	External size (feet)	Internal size (m)	Internal size (feet)	Internal area (m <sup>2</sup> )	RRP (inc VAT)
2 x 2 R & L	2.7 x 2.6	8' 10" x 8' 6"	2.4 x 2.3	7' 10" x 7' 5"	5.6	£11,200.00
3 x 2 R & L	3.7 x 2.7	12' 1" x 8' 10"	3.4 x 2.4	11' 1" x 7' 10"	7.5	£13,300.00
3 x 3 R & L	3.7 x 3.7	12' 1" x 12' 1"	3.4 x 3.4	11' 1" x 11' 1"	10.2	£15,300.00
4 x 3 R & L	5.0 x 3.7	16' 4" x 12' 1"	4.7 x 3.4	15' 4" x 11' 1"	14.4	£17,700.00
5 x 3 R & L	6.2 x 3.7	20' 3" x 12' 1"	5.9 x 3.4	19' 3" x 11' 1"	18.4	£20,300.00
4 x 4 R & L	5.0 x 4.9	16' 4" x 16' 0"	4.7 x 4.6	15' 4" x 15' 0"	20.0	£21,700.00
6 x 3 R & L	7.4 x 3.7	24' 3" x 12' 1"	7.1 x 3.4	23' 2" x 11' 1"	22.5	£22,900.00
5 x 4 R & L	6.2 x 4.9	20' 3" x 16' 0"	5.9 x 4.6	19' 3" x 15' 0"	25.5	£24,100.00
7 x 3 R & L	8.6 x 3.7	28' 2" x 12' 1"	8.3 x 3.4	27' 2" x 11' 1"	26.6	£25,300.00
8 x 3 R & L	9.8 x 3.7	32' 1" x 12' 1"	9.5 x 3.4	31' 1" x 11' 1"	30.0	£26,700.00
6 x 4 R & L	7.3 x 4.9	23' 11" x 16' 0"	7.0 x 4.6	22' 10" x 15' 0"	30.0	£26,700.00



## Studio Corner. Diagonal doors and windows

Model	External size (m)	External size (feet)	Internal size (m)	Internal size (feet)	Internal area (m <sup>2</sup> )	RRP (inc VAT)
Ten	3.5 x 3.5 (max)	11 '6" x 11 '6" (max)	3.2 x 3.2 (max)	10 '6" x 10 '6" (max)	10.0	£15,700.00
Fifteen	4.7 x 4.7 (max)	15 '3" x 15 '3" (max)	4.4 x 4.4 (max)	14 '3" x 14 '3" (max)	15.0	£18,900.00
Twenty	5.3 x 5.3 (max)	17 '2" x 17 '2" (max)	5.0 x 5.0 (max)	16 '2" x 16 '2" (max)	20.0	£22,000.00
Twenty Five	5.7 x 5.7 (max)	18 '6" x 18 '6" (max)	5.4 x 5.4 (max)	17 '7" x 17 '7" (max)	25.0	£24,300.00
Thirty	6.2 x 6.2 (max)	20 '2" x 20 '2" (max)	5.9 x 5.9 (max)	19 '2" x 19 '2" (max)	30.0	£27,200.00

## Upgrades: our most commonly selected upgrades are listed below

Upgrades	Description	Cost
Cladding (vertical)	Change from Thermowood 'D' Pine to Western Red Cedar	£30 per m <sup>2</sup>
Windows	Change from uPVC to Aluminium (powder coated in anthracite grey RAL7016)	£500 - £1,500 in standard configuration
Windows	Change from standard glazing to high performance glazing	£85 per m <sup>2</sup>
Flooring	Change from laminate to engineered wooden flooring	£45 per m <sup>2</sup>
Lighting	LED down light (white)	£60 per light
Lighting	Upgrade to brushed metal LED down light	£5 extra per unit
Lighting	Dimmable (with appropriate switches)	£10 per extra per unit

## Full specification: the following luxury specification included:

### Foundations/Floor

Galvanised steel pile foundations 865, 1000 or 1200mm depth depending on ground conditions.

### Main Structure

Wall and ceiling are made from structurally insulated panels system (SIPS) – filled with highly thermally efficient expanded polyurethane. SIP's thermal efficiency values range from U = 0.21 - 0.27 w/m<sup>2</sup> k (equivalent to 320mm - 450mm of mineral wool).

### Roof Construction

Single ply Firestone rubber (EPDM) roofing system (20 year guarantee, 50 year expected life) finished with aluminium trim and black plastic rainwater guttering (including gutter guard).

### Doors, Windows and Screens

1 off - 1.8m wide x 2.05m high French Doors, 2 or 3 off - 0.9m wide x 2.05m high fixed window screens and 1 off - 1.2m wide x 0.48m high top hung opening window; uPVC double glazing (grey) with high security 5-point locking to doors, key operated locks to windows and double glazed with toughened glass.

### External Cladding

Thermowood (kiln dried, zero maintenance) external timber cladding with secret fixing. External timber painted in Tikkurila ultra paint – RAL colour coded to perfectly match glazing frames.

### Internal Finish

Walls: Fully plastered finish & decorated interior (matt white) with 4" painted skirting boards.  
Floor: A good choice of quality 8mm wood effect laminates (25 year residential warranty). V groove and one strip.

### Fixtures and Fittings

1 light switch (white), 3-8 double power sockets (white), up to 4 contemporary 5" 'butterfly style' strip lights and a consumer unit with RCD.

